

RADIO PLAY ASSIGNMENT

GARAGE BAND INSTRUCTIONS

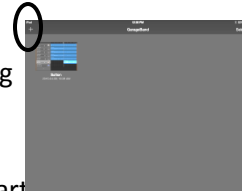
1. Open GARAGE BAND



2. Select MY SONGS (upper left hand corner)

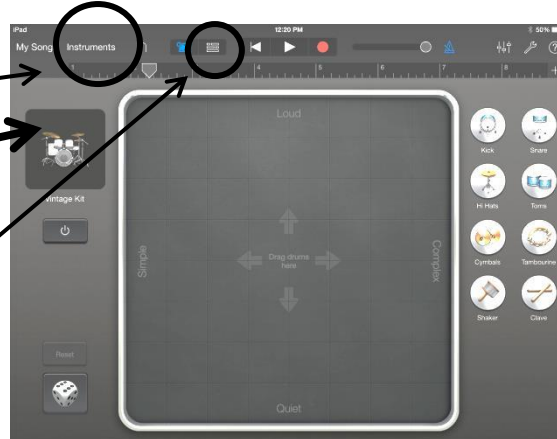


3. The plus sign + (upper LEFT) will allow the creation of a NEW song



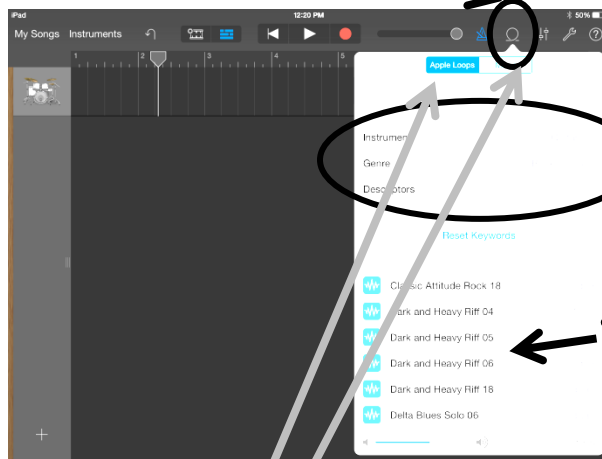
4. Select the type of instrument you wish to use first (using e.g. smart drums, smart strings, smart bass, smart keyboard, smart guitar etc.). It is suggested to select the main beat that you wish to have throughout the entire song

5. Select Smart Drums ...;
Select the type of drum kit/drum machine vintage kit you wish to use;

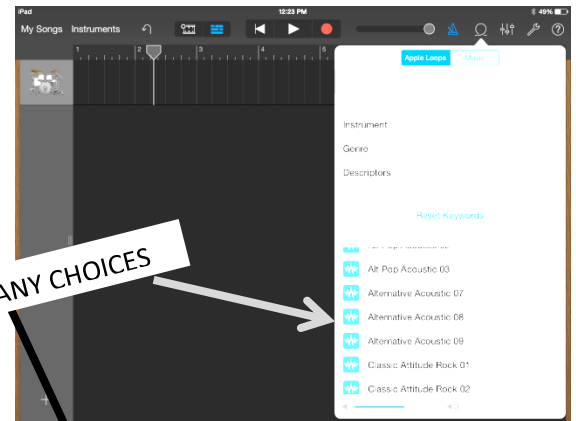


6. Change the view to the BRICK WALL icon

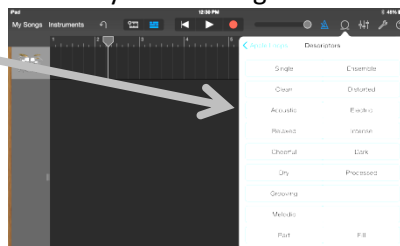
7. The LOOP icon will now appear ...



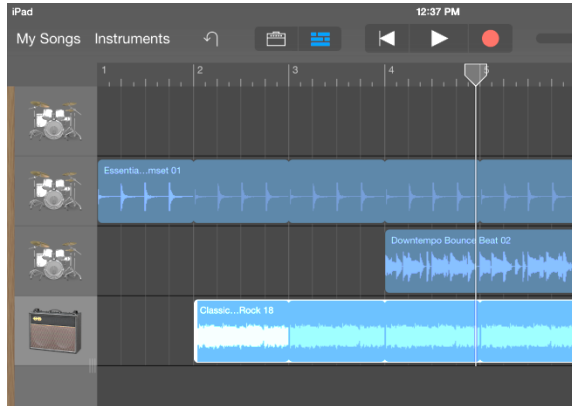
SO MANY CHOICES



8. Select this and select APPLE LOOPS. Ensure that you have the correct INSTRUMENT/GENRE selected (e.g. Kits vs. Drums or woodwind; and that you like the genre selected). You can also select a variety of descriptors.



9. Listen to the various apple loops you can select from. When you have found one that you like ... just drag it to the approximate location you wish to have it begin



10. Continue adding more loops from various instruments (each one will be on its own track/line)

11. Using the Audio Recorder you can RECORD any additional sound you would like. If wanted, an external microphone may be purchased but it's not necessary. It is suggested, to use headphones to listen to pre-existing material (e.g. loops/prior recorded material) you have already placed into your composition while you record new stuff.



12. You can also change different items in your composition, by accessing a few other options.

