

GEOTRICITY

BRINGING GEOMETRY TO OUR WORLD

This program is brought to you by your
Grade 8 Math Team.

thorough
speaking Coolmath
really shortened
America polyhedra
Includes fractions activities
Unlimited
site flashcards
arithmetic
interactive
basic brain
comprehensive Lists
English
tutorials
available
subtraction
featuring
games
educational puzzles
teachers
lessons geometry
worksheets
multiplication problems
solutions
instructions
Free
mastery
Plans
addition
algebra
Students
homework
mathematics
resources
division
formulas
History
benders
school
benders
fun
Mailing
videos
packed
tips
grades
allows
lots
middle
tessellations
parents
help
North
Chatboard
Action
set
singular
practice
cards
decimals
concepts
elementary
Unlimited
flashcards
activities
fractions
polyhedra
shortened
speaking
thorough
America
Includes
arithmetic
interactive
basic
comprehensive
English
tutorials
available
subtraction
featuring
games
educational
puzzles
teachers
lessons
worksheets
multiplication
solutions
instructions
Free
mastery
Plans
addition
algebra
Students
homework
mathematics
resources
division
formulas
History
benders
school
benders
fun
Mailing
videos
packed
tips
grades
allows
lots
middle
tessellations
parents
help
North
Chatboard
Action

We are going to participate in a 2 1/2 day special event brought to you by...

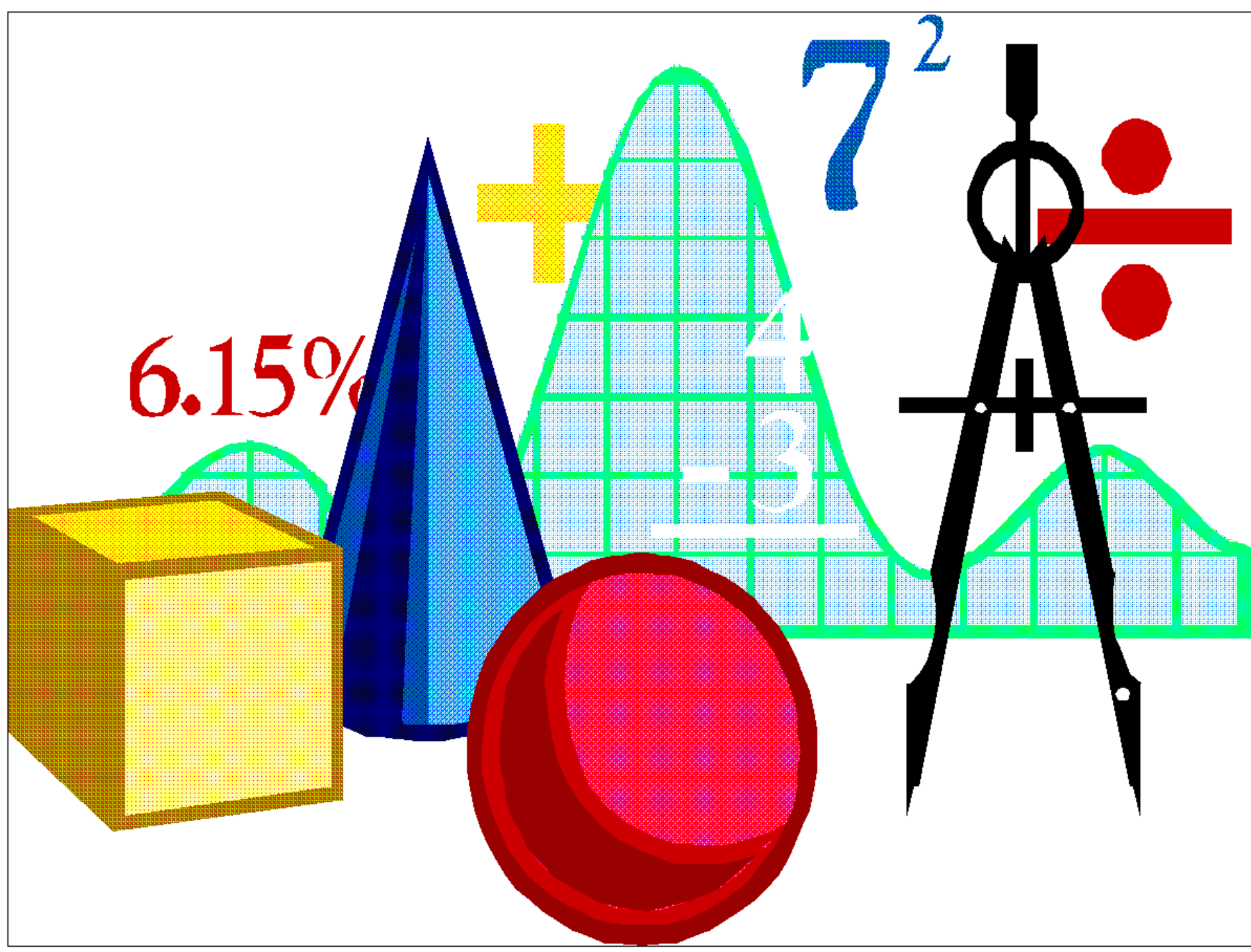
The Robert Service Geotricity Team

WHY DO THIS??

Let's celebrate our neighbourhood, evaluate and analyze it's geometric properties, and explore complementary land use.

So get out YOUR:

- ✓ manipulatives**
- ✓ Geometry and measurement tools and knowledge**
- ✓ geographic inquiry skills**



OVERVIEW OF THE DAY

- **Day 1:**
- **we will explore our neighbourhood during a community walk with an introductory activity.**
- **after the walk we will return to the cafe and computer lab to complete the geometry task.**
- **students will hand in their findings.**
- **a Venn Diagram Activity/ Mapping Activity**
- **recap for the day**

QUESTIONS?

TODAY'S AGENDA

12:45-1:15

- **Go over summary of events per day**
- **introduce first activity**

1:15-2:00

- **community walk**

2:00-2:45

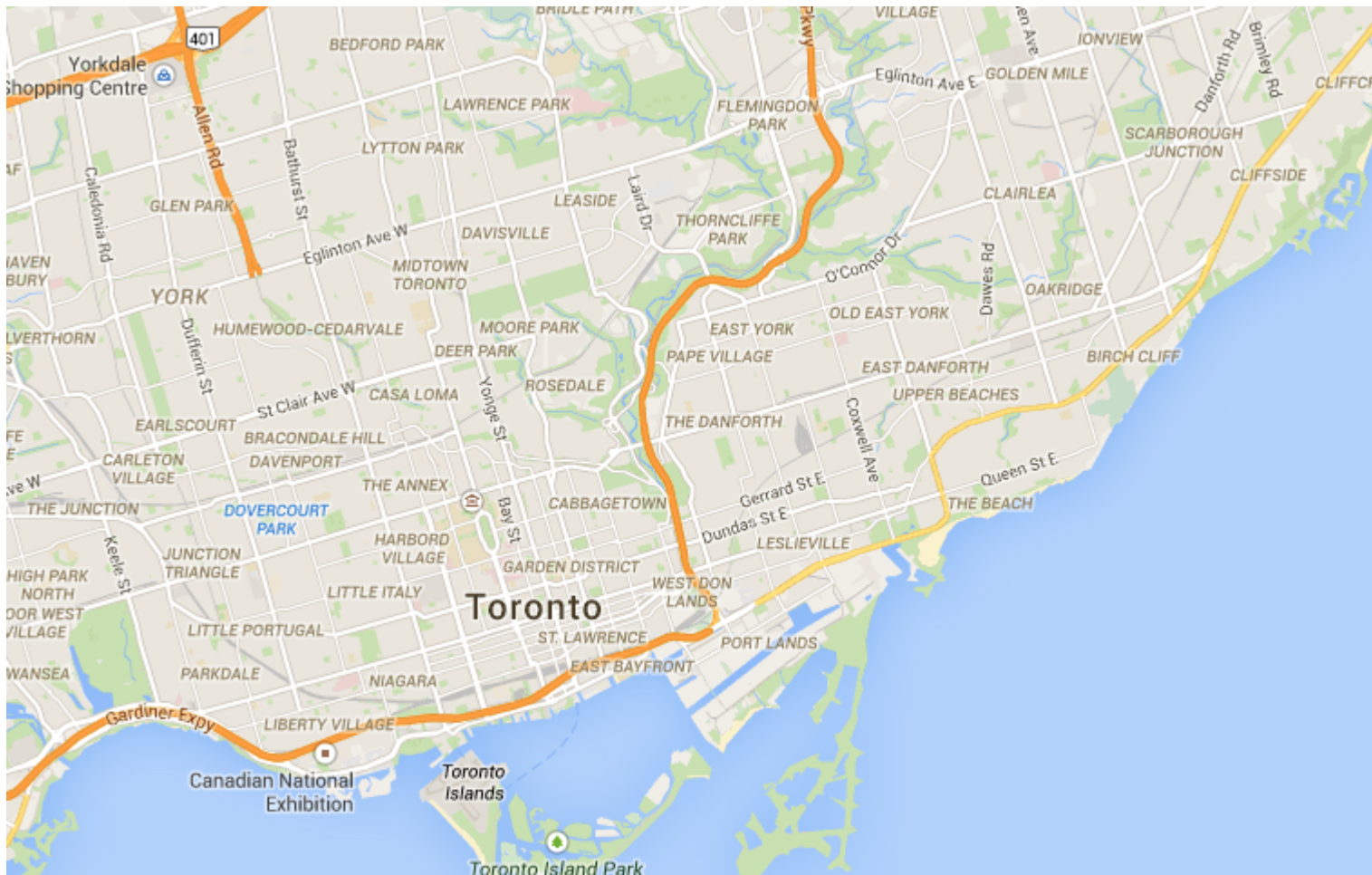
- **explanation of Venn Diagram based on geometric observations/properties and Mapping Activity**
- **complete activities**

2:45-3:13

- **summarize/review the day**
- **hand in Venn Diagrams**

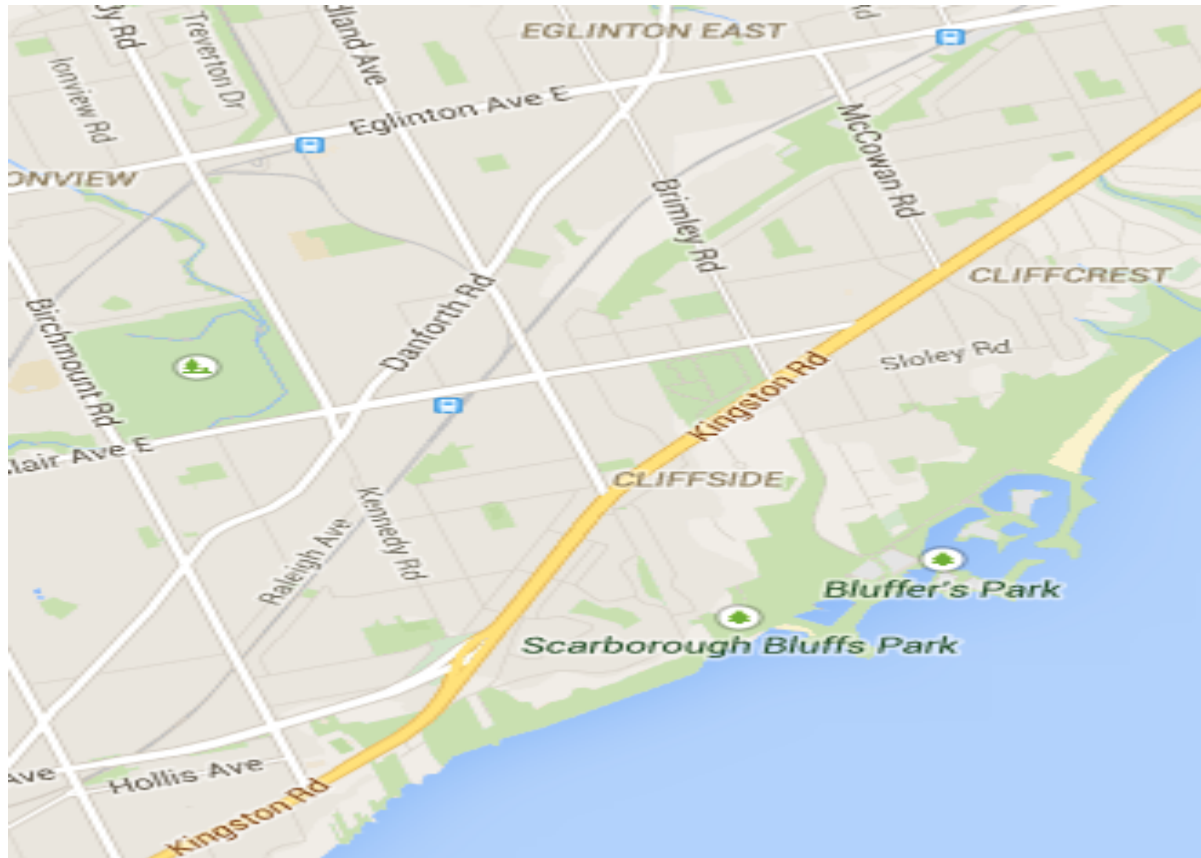
Our City of Toronto

What geometric ideas do you notice about the road system in Toronto?



Our Community of Scarborough Junction

What geometric ideas do you notice about the intersections at Danforth and Midland and Danforth and Brimley? Why might those intersections have different properties than many in Toronto?



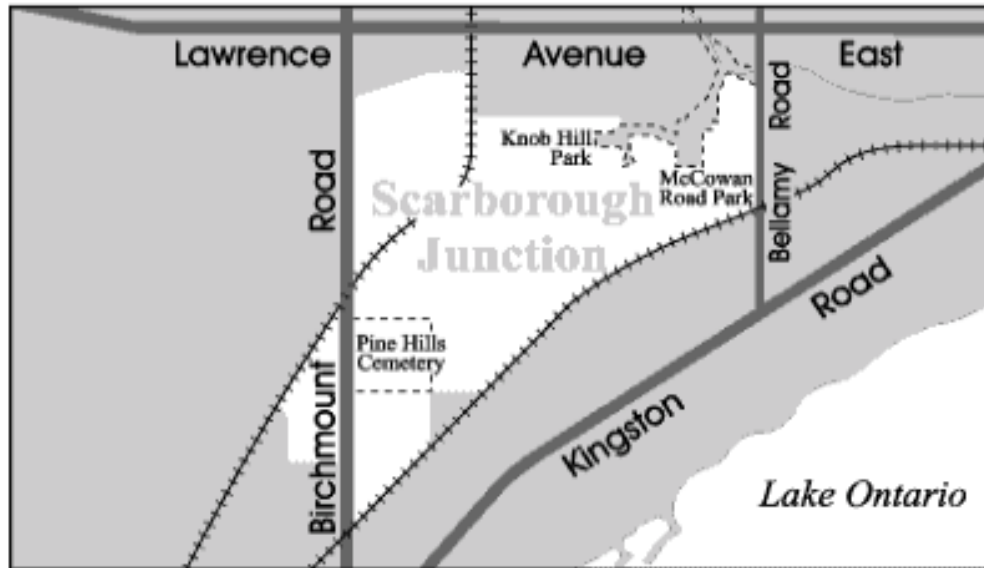
The History of our Community: “Scarborough Junction”

Scarborough Junction received its name in 1873, when a post office using this name was opened in the Bell General Store which stood on the south-west corner of Kennedy Road and St. Clair Avenue. The Junction part of this name referred to the two railways - the Grand Trunk and the Toronto-Nippising - which crossed paths at the south end of this neighbourhood.

In 1896, Scarborough Junction was the most heavily populated village in the former Township of Scarborough. It had its own school, general store, and the Bethel Methodist Church. The historic Bethel Church Cemetery is quietly tucked away off Kennedy Road, south of Eglinton Avenue.

The urbanization of Scarborough Junction took place in the late 1940's and the 1950's when farm fields were replaced with rows of war veterans' housing and cosy little bungalows. These houses sold very quickly to young families that were looking for affordable houses in what was then the outskirts of Toronto.

Welcome to Scarborough Junction



Accessed from: <http://www.torontoneighbourhoods.net/neighbourhoods/scarborough/scarborough-junction> (March 27th, 2015. 10:00am)

Community Walk

Lets take a walk through our community.

Learning Goals:

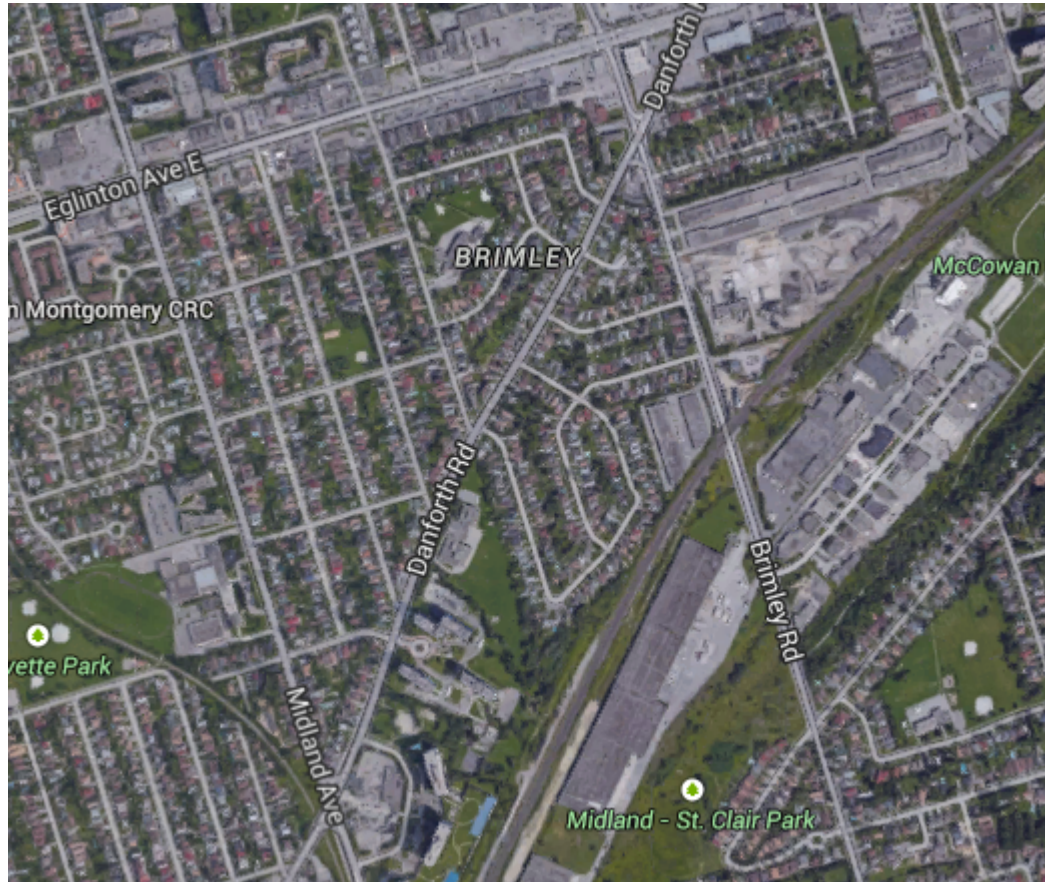
We will learn how geometric properties of quadrilaterals and circles create our community.

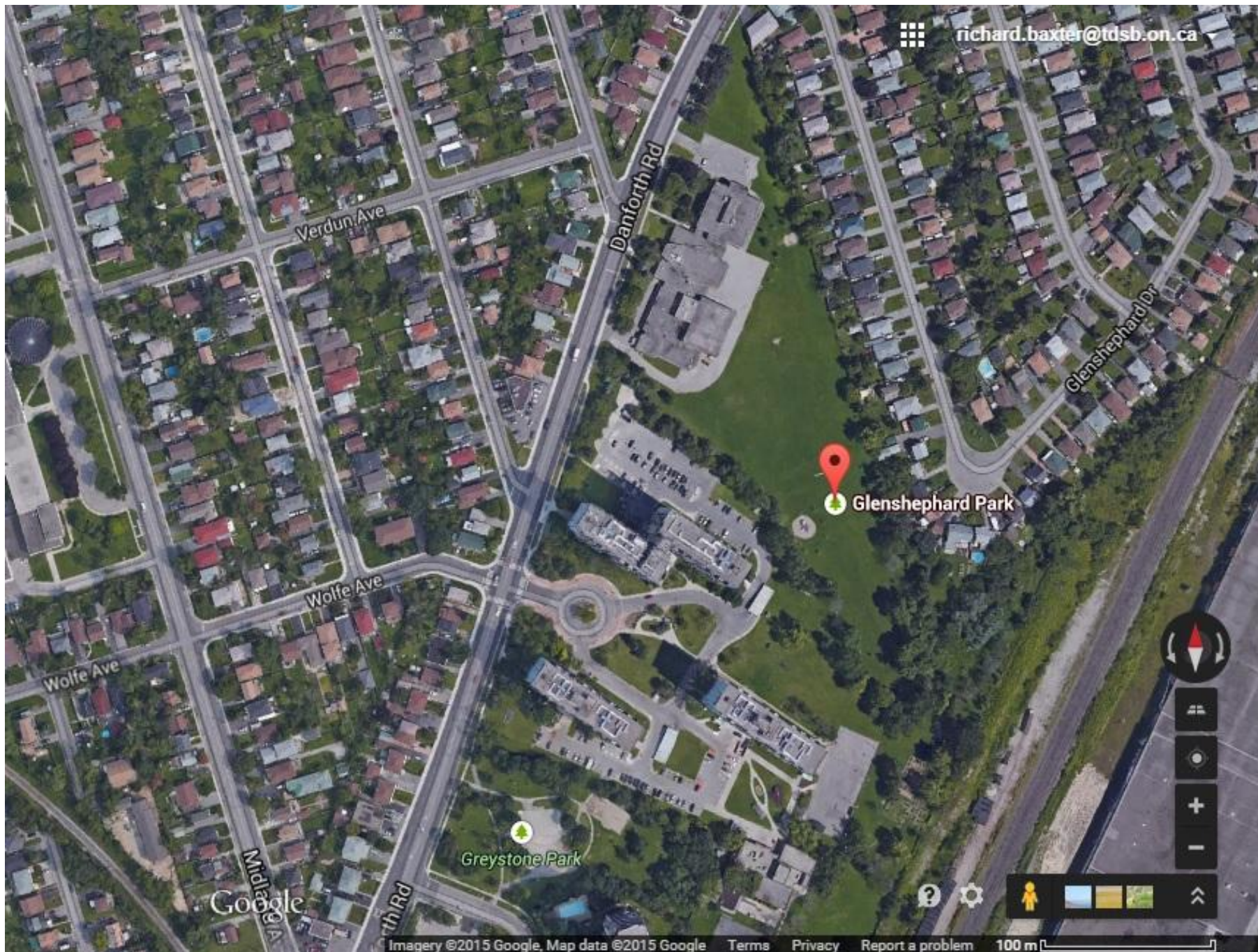
We will learn about geometric relationships involving lines and triangles, and how they create our community.

Our Community Walk

8A/8B: Midland and Danforth

8C/8D: Midland and Brimley





richard.baxter@tdsb.on.ca

Verdun Ave

Danforth Rd

Glenshephard Dr

Wolfe Ave

Wolfe Ave

Midland Ave

Danforth Rd

Glenshephard Park

Greystone Park

Google

MATH

ROCKS

GEOMETRIC OBSERVATIONS/PROPERTIES

SORTING AND CLASSIFYING

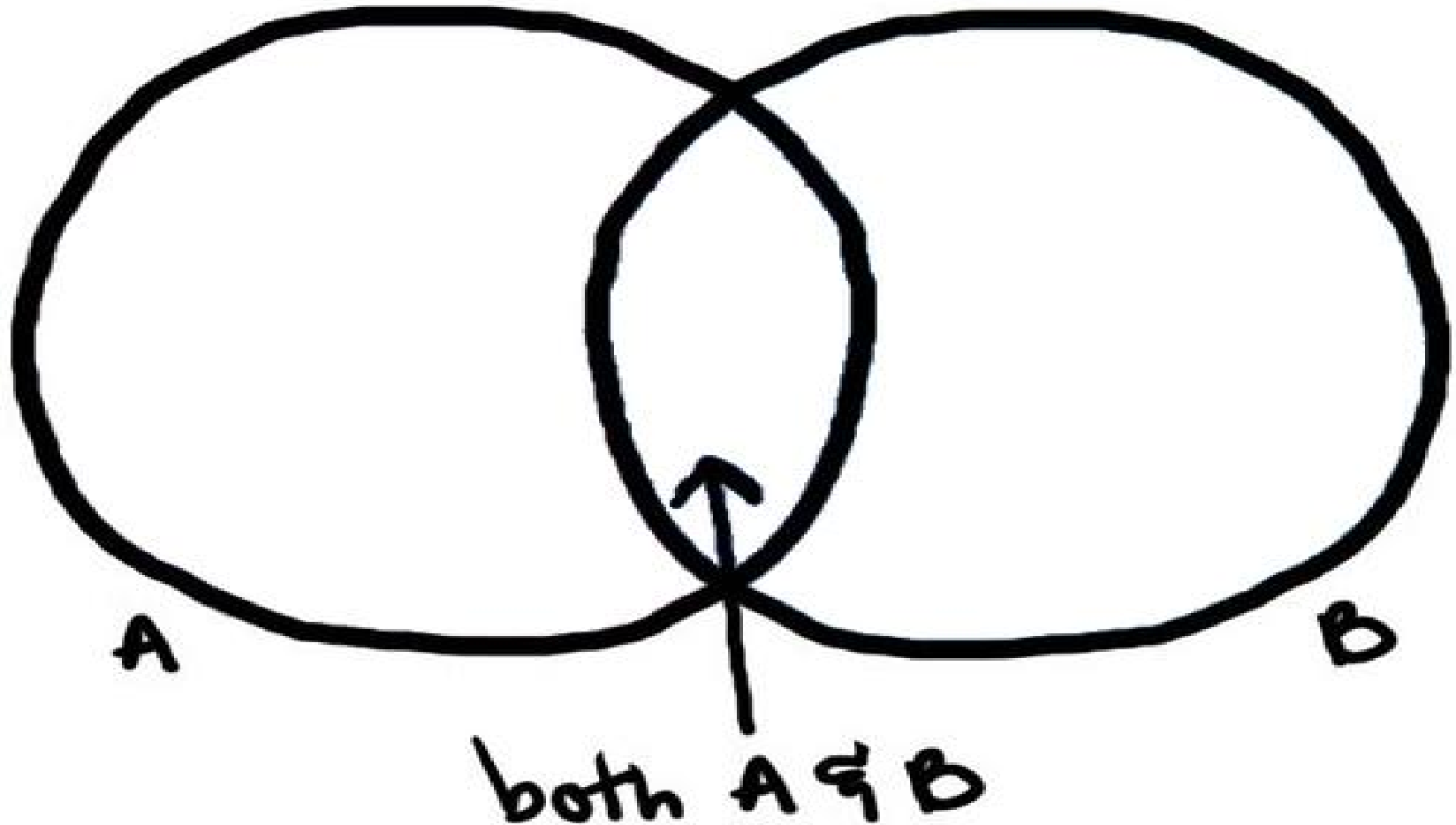
BEFORE WE CAN START OUR VENN DIAGRAM...

- PICK 2 PROPERTIES
- ORGANIZE A CHART AND SORT

PROPERTY 1	PROPERTY 2	PROPERTY 1 AND 2

- ARE THERE ANY THAT OVERLAP AND HAVE BOTH PROPERTIES??
- LABEL ONE CIRCLE WITH PROPERTY 1
- LABEL ONE CIRCLE WITH PROPERTY 2
- LABEL THE MIDDLE OF YOUR VENN DIAGRAM AS BOTH; 1 AND 2

SAMPLE VENN DIAGRAM



DAY 2 OVERVIEW

- **welcome**
- **review agenda**
- **introduction of 2 day task/timeline**
- **selection of groups for task**
- **visit the space allotted**
- **lunch**
- **meet in cafe to go over afternoon activity and success criteria/voting criteria**
- **rotate through spaces to access materials/manipulatives**

QUESTIONS?

DAY 2 AGENDA

8:45-9:00

- entry and attendance by class in cafeteria

9:00-9:15

- Agenda

9:15-9:45

- introduction to culminating task and all criteria

9:45-10:15

- rotations to view the community space

10:15-11:35

- Phase 1 of task

12:45-1:15

- attendance and review agenda
- introduce first activity

1:15-2:55

- phase 2 of task

2:55-3:13

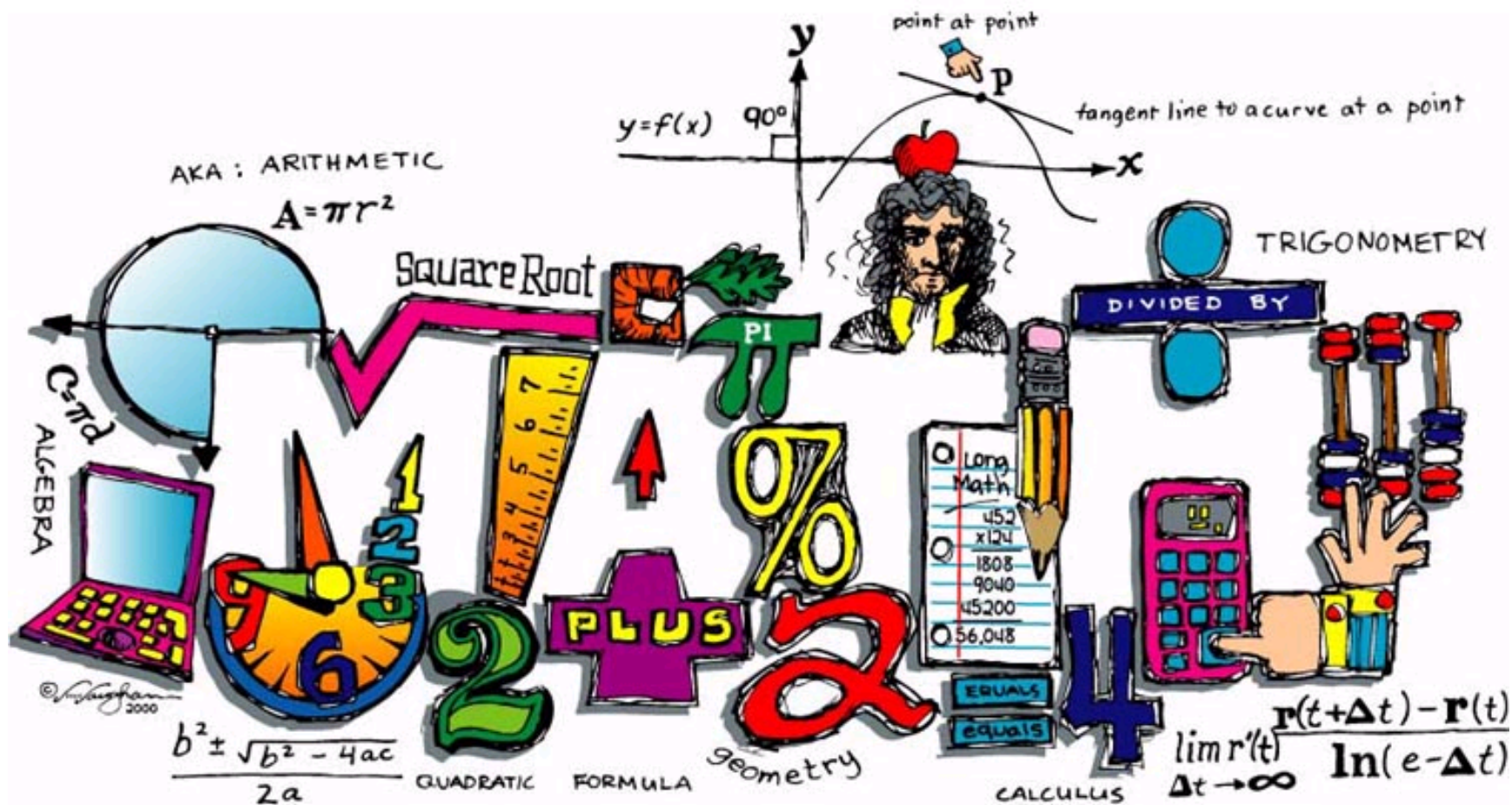
- summarize/review the day



DAY 3 OVERVIEW

- **welcome**
- **review agenda**
- **work on task**
- **lunch**
- **review/last minute prep**
- **gallery walk with judges and grade 7s**
- **voting/ filming for marking**
- **announce winners**

QUESTIONS?



DAY 3 AGENDA

8:45-9:00

- entry and attendance by class in cafeteria

9:00-9:15

- Agenda

9:15-9:45

- Review of timelines/success criteria

9:45-11:35

- Phase 3 of task

12:45-1:45

- attendance and review agenda
- finishing touches for phase 3 and Gallery Walk prep

1:45-2:50

- Gallery Walk

2:50-3:10

- summarize/review the day
- announce winners
- clean-up

MATH



FUN

THANK YOUs

- Grade 8 students of Robert Service
- Ms. Murray
- The Geotricity Team: Ms. Schoenfeld, Ms. Ramsay, Mr. Baxter, Mr. Hall, Ms. Timbury
- All staff

Have a safe walk home Robert Service;)

Math
Teachers
Rock!